

PROF

CONTENT

- 01 **BRIEF**
Who We Are
Why ROF ARCHITECTS
Our Milestone
- 02 **OUR SERVICES**
- 03 **SELECTED PROJECTS**
Architectural
Interior Design
- 04 **OUR PARTNERS**
- 05 **CONNECT US**

01



WHO WE ARE



WE WERE FOUNDED WITH A VISION TO REDEFINE THE ARCHITECTURAL LANDSCAPE. BACKED BY OUR TEAM OF DEDICATED PROFESSIONALS—EACH BRINGING EXTENSIVE EXPERTISE AND BOUNDLESS CREATIVITY TO EVERY PROJECT, FROM CONCEPT THROUGH COMPLETION—WE SEAMLESSLY BLEND BEAUTY AND FUNCTIONALITY SO THAT EVERY SPACE WE CRAFT TELLS ITS OWN UNIQUE STORY. DRIVEN BY AN UNWAVERING COMMITMENT TO EXCELLENCE, SUSTAINABILITY, AND CLIENT SATISFACTION, WE INVITE YOU TO JOIN US IN SHAPING THE FUTURE OF DESIGN AS WE TRANSFORM DREAMS INTO ARCHITECTURAL MASTERPIECES.

WHY ROF ARCHITECTS

Process-Driven Excellence

At ROF Architects, every project begins with a rigorous, research-led process. From site analysis to design development, we ensure every decision is backed by data, technical insight, and innovative thinking—delivering solutions that are both beautiful and functional.

Sustainable by Design

Sustainability isn't an afterthought—it's at the heart of what we do. We integrate green building principles, passive design strategies, and responsible material selection to minimize environmental impact while maximizing occupant comfort and lifecycle performance.

Cutting-Edge Technology & Collaboration

Leveraging BIM, 3D visualization, and advanced simulation tools, we streamline coordination among architects, engineers, and consultants. This collaborative workflow reduces risk, accelerates delivery, and keeps you informed at every stage.

Proven Track Record & Client Focus

With a portfolio spanning residential, commercial, and institutional landmarks, our clients trust us for our reliability, responsiveness, and unwavering commitment to their vision. Your goals become ours—and we measure success by your satisfaction.

OUR MILESTONES

DEEP ROOTS AND RENEWED AMBITION

Founded in 2024, ROF Architects builds upon over 25 years of accumulated expertise from the Sakf Group. Our story began in 1996 with the launch of Al Rawaf Contracting, a leader in general contracting, infrastructure development, urban planning, and power, water, and energy solutions.



A JOURNEY OF ACHIEVEMENTS

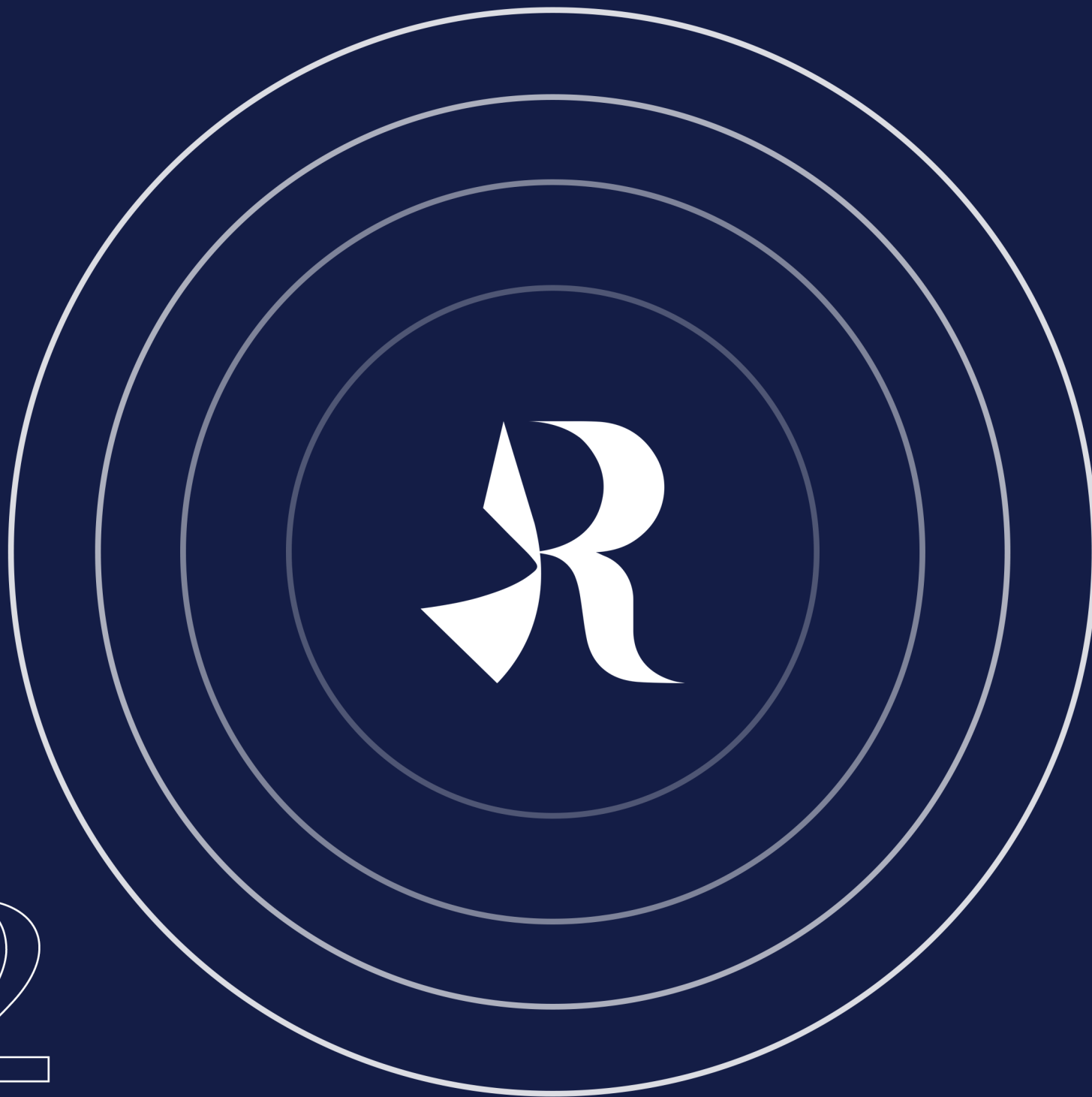
Since our inception, the Sakf Group has delivered numerous landmark projects that have shaped the urban landscape of Saudi Arabia and beyond, partnering with esteemed entities such as NEOM and the Royal Commission for Riyadh. Along the way, we've honed deep, specialized expertise in all aspects of engineering and construction and cultivated a broad network of strategic partners.



ROF ARCHITECTS: A FRESH VISION

With its 2024 launch, ROF Architects harnesses decades of proven success to serve the engineering consultancy sector. We are committed to delivering innovative architectural solutions that blend tradition with modernity while prioritizing sustainability and efficient resource use.





02

OUR EXPERT SERVICES

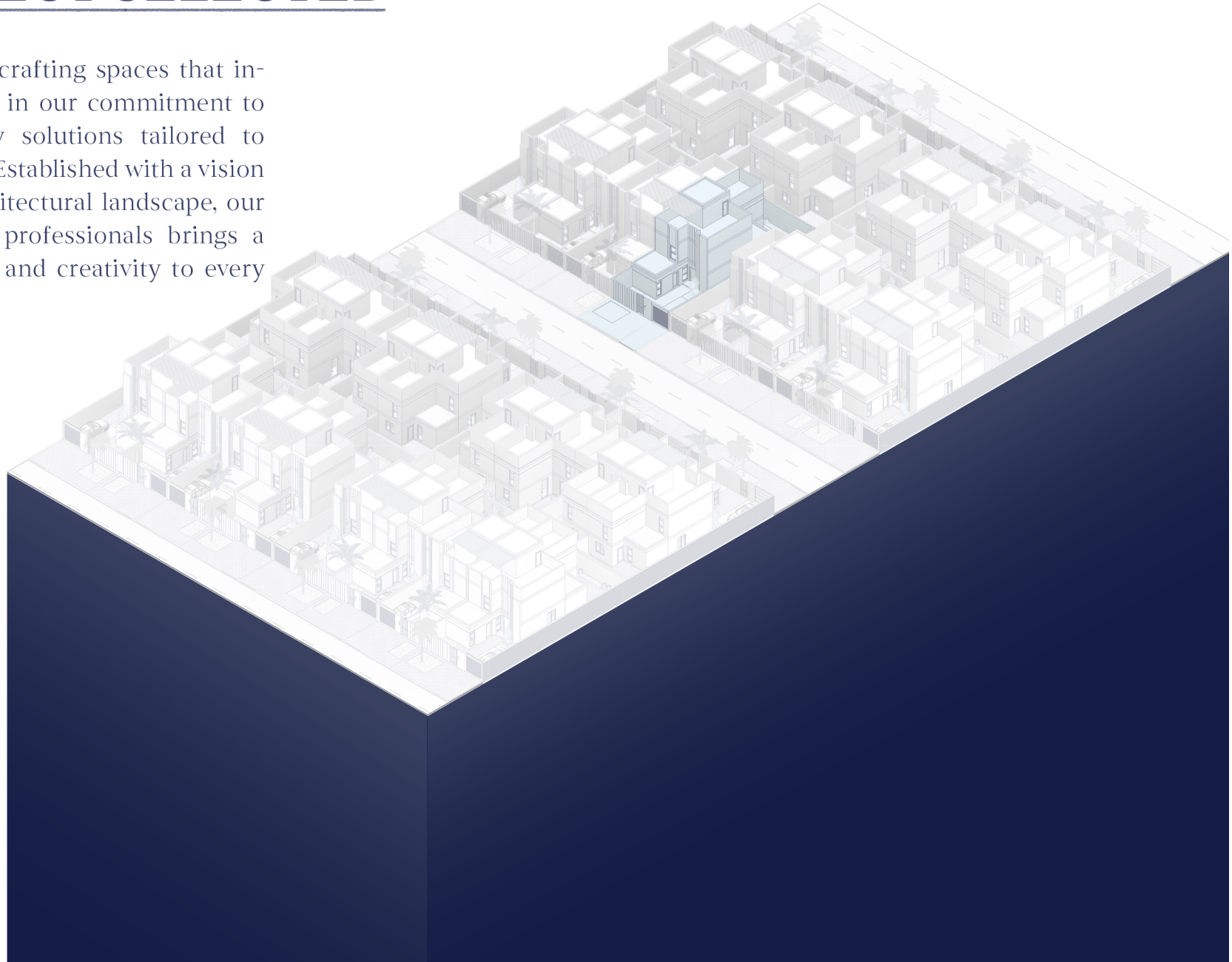
ROF ARCHITECTS adopts a comprehensive and interdisciplinary methodology in architectural design, fostering close collaboration with stakeholders to develop refined and sustainable solutions across all scales from urban developments and landscapes to architectural, structures and interior environments. Motivated by a profound dedication to creating spaces that inspire, we uphold a steadfast commitment to delivering forward-thinking and client centered outcomes. Established with a clear vision to transform the architectural domain, our team of highly qualified professionals contributes extensive expertise and innovative perspectives to each project entrusted to us.

Our services include:

- Architectural design
- Urban design/ Master planning
- Landscape architecture
- Interior design
- Structural and building services engineering (mechanical, electrical, plumbing and fire protection)
- Quantity surveying
- Construction contract administration and site supervision

OUR PROJECT SELECTED

With a passion for crafting spaces that inspire, we take pride in our commitment to delivering visionary solutions tailored to your unique needs. Established with a vision to redefine the architectural landscape, our team of dedicated professionals brings a wealth of expertise and creativity to every project.



03

3.1 SADU TABUK

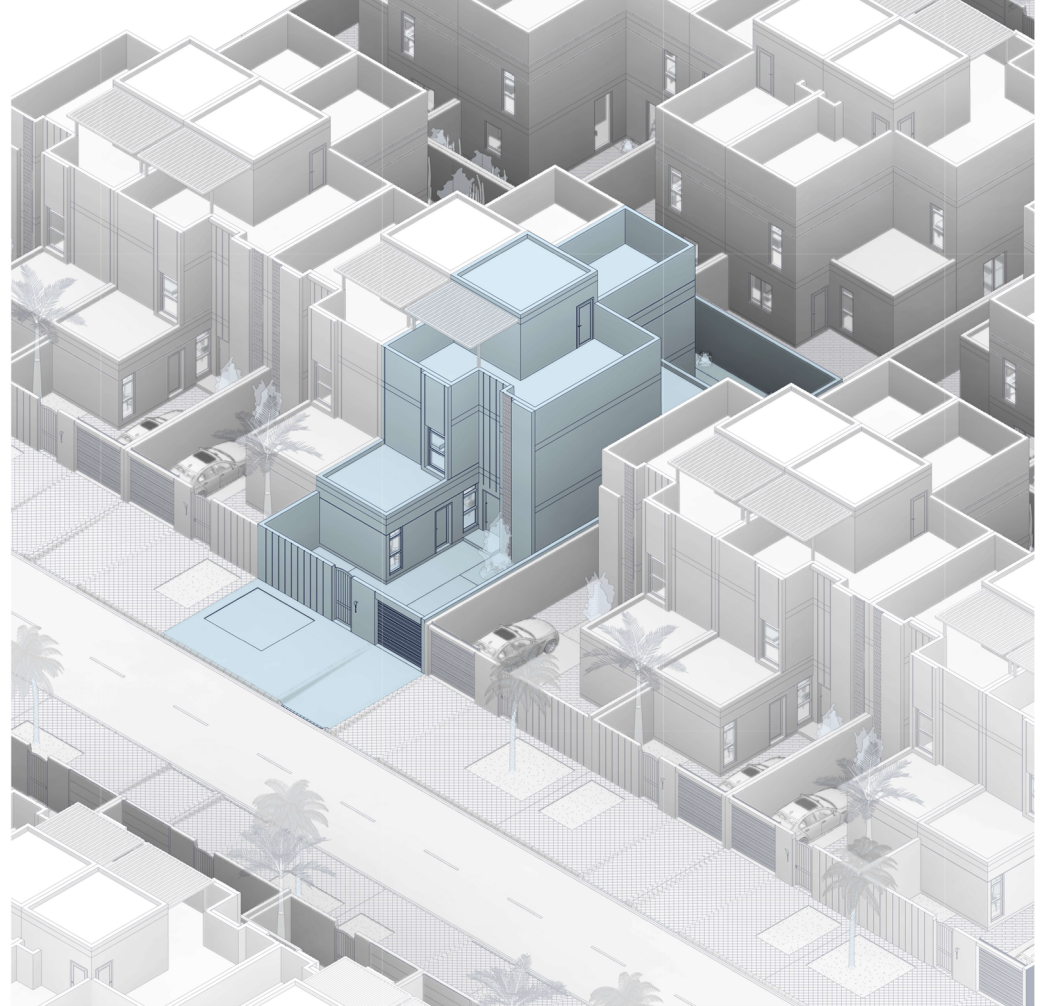
PROJECT TYPE: Residential

PROJECT YEAR: 2025

LOCATION: TABUK

AREA: Varied (200 - 250 - 300 - +350)

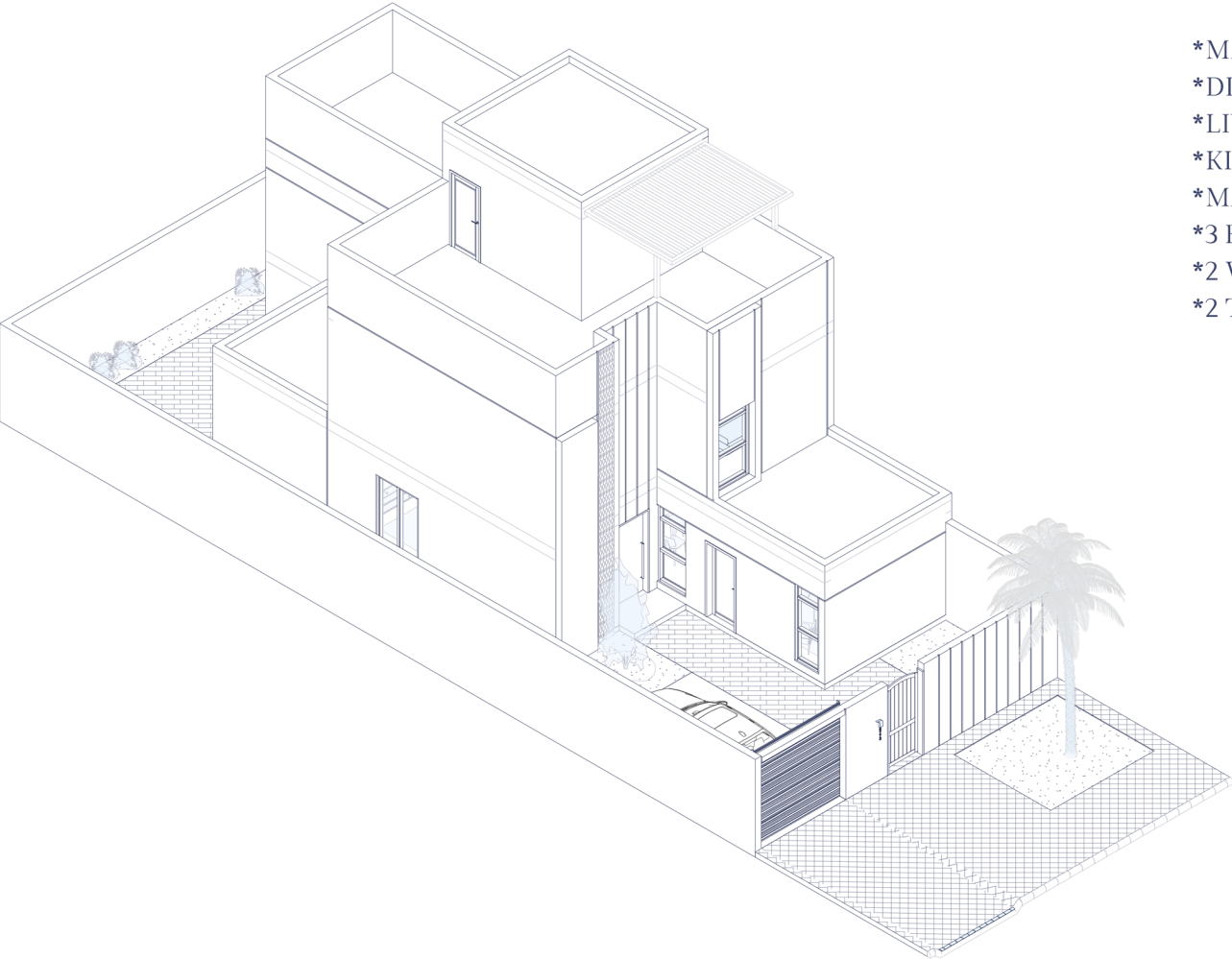
UNIT COUNT: +1400 VILLA



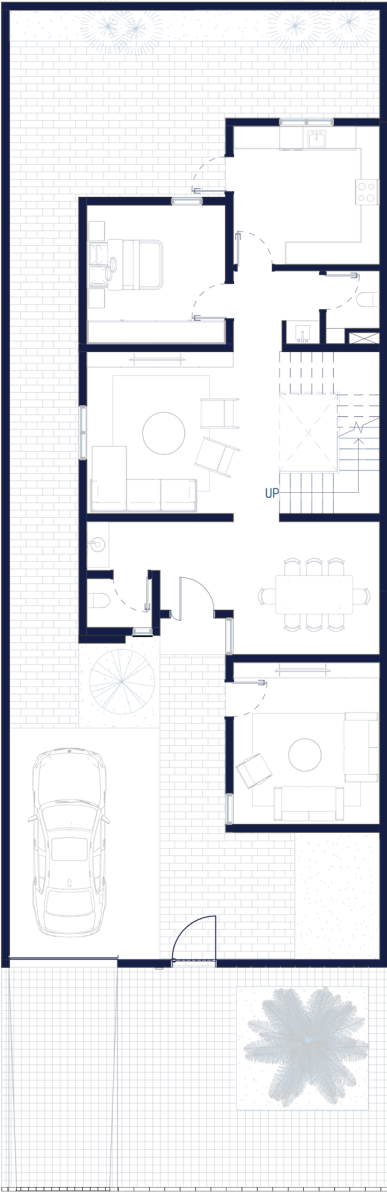
The **Sadu Tabuk** Project is one of the largest residential developments in the northern region, comprising over 1,400 fully integrated villas. Our firm was entrusted with the **comprehensive design scope, covering architectural design** inspired by the Najdi Northern style in line with the recently approved Regional Architectural Guidelines, as well as **structural and electromechanical design**. This integrated approach ensures a cohesive and high-quality development that reflects both cultural identity and modern living standards.

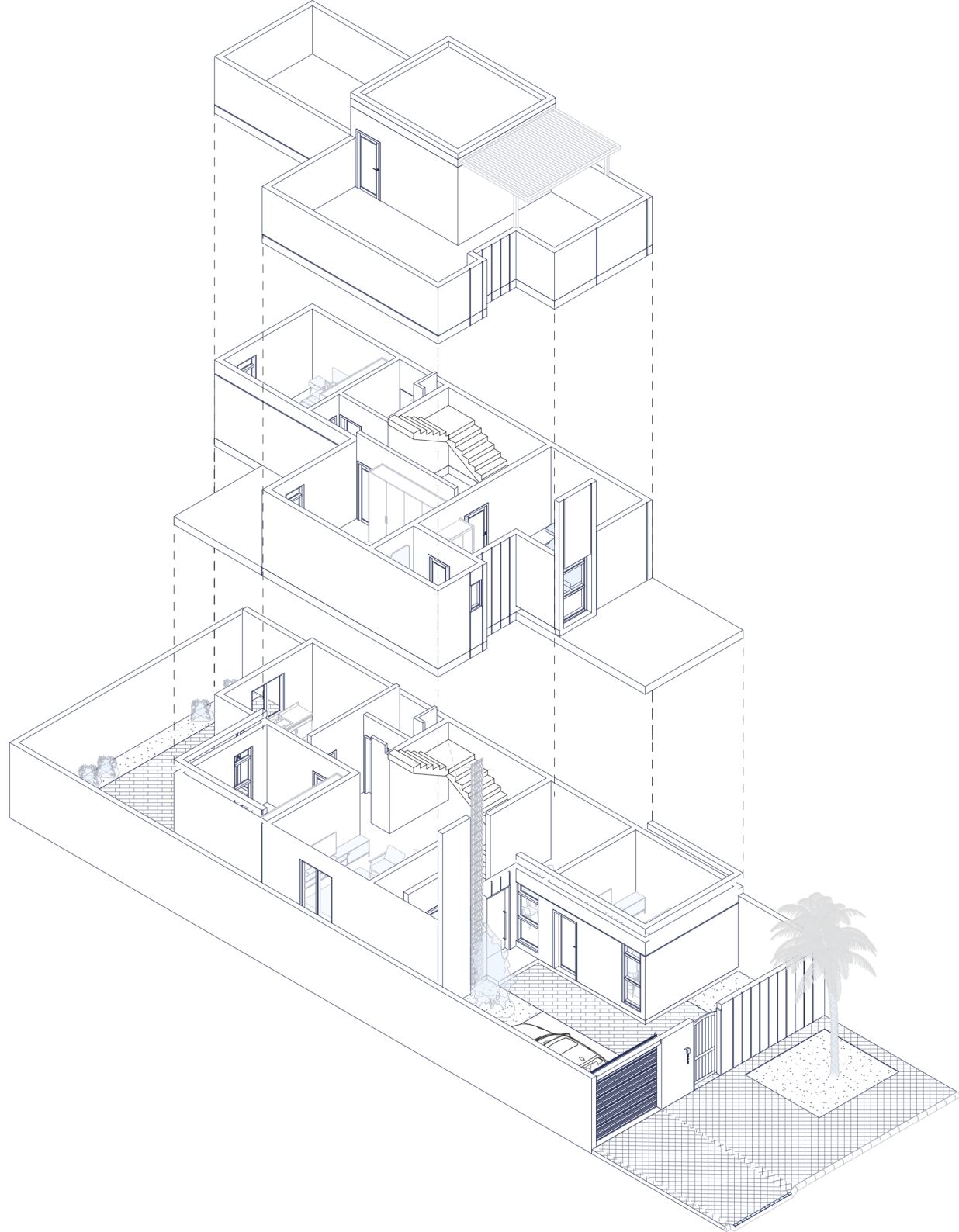
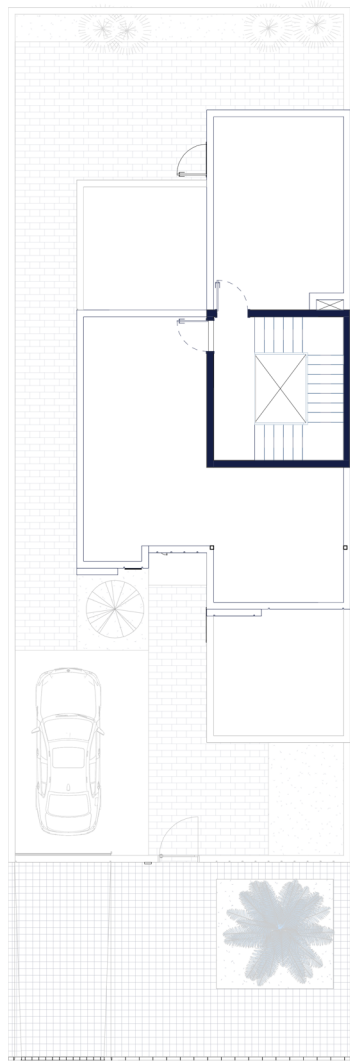
The project is developed by **Telad Real Estate**, in collaboration with the NHC “**NATIONAL HOUSING COMPANY**”, to serve as a pioneering model for contemporary residential communities that embrace privacy, authenticity, and sustainability while enhancing the quality of life for Saudi families. Through this achievement, we reaffirm our commitment to contributing to the urban development of Saudi cities, delivering innovative design solutions that harmonize tradition with modernity.

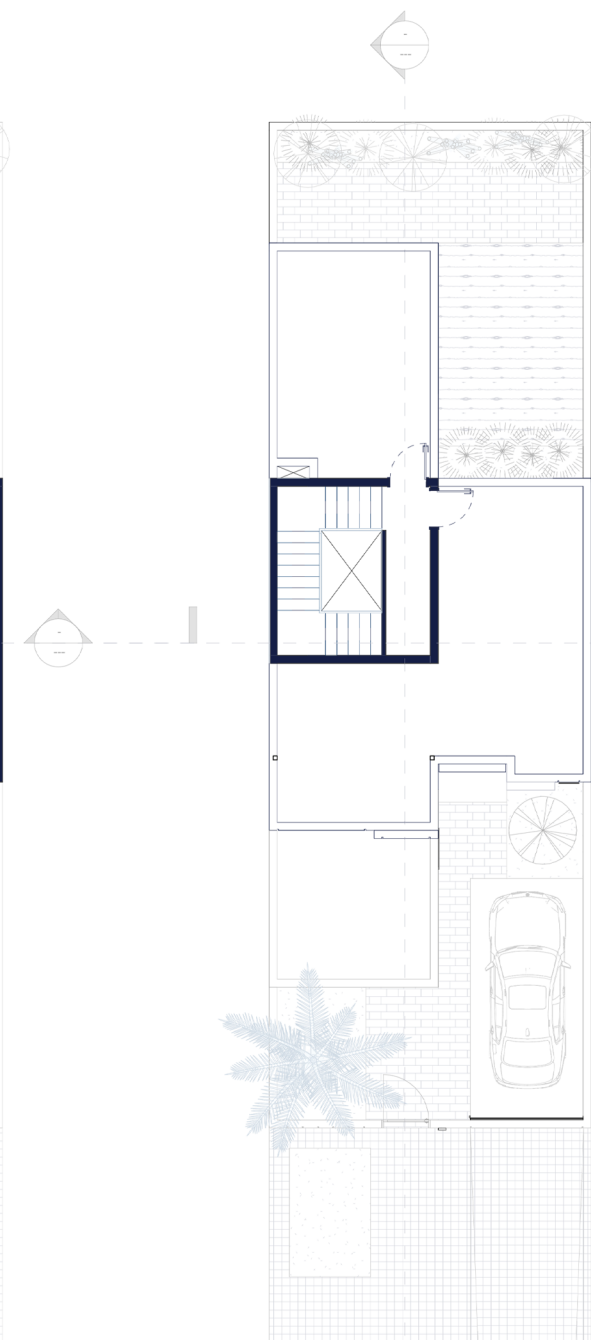
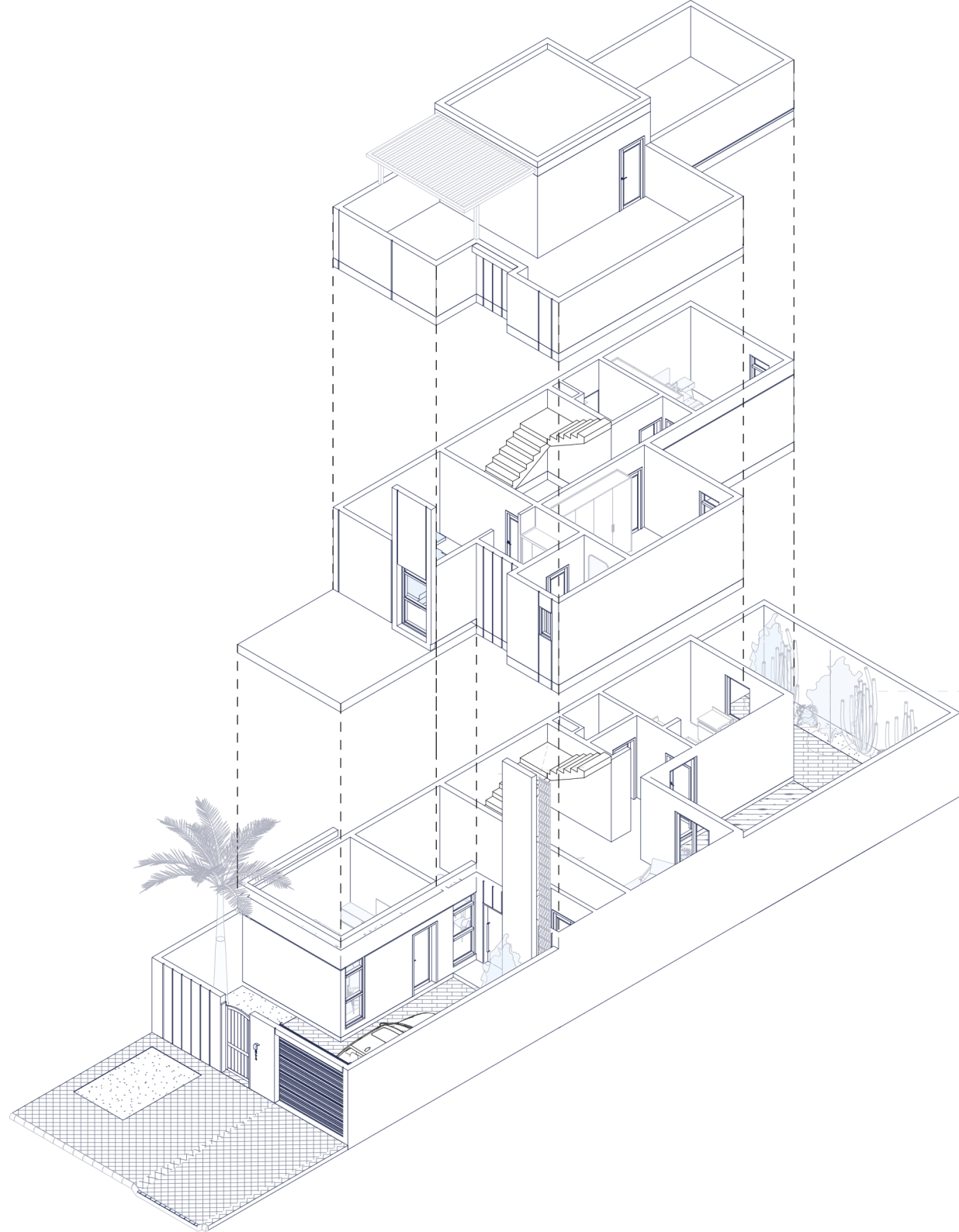
VILLA TYPE- A



- *MAJLIS
- *DINING ROOM
- *LIVIVG AREA
- *KITCHEN
- *MASTER BEDROOM
- *3 BEDROOMS
- *2 WC
- *2 TOILETS







VILLA TYPE- B

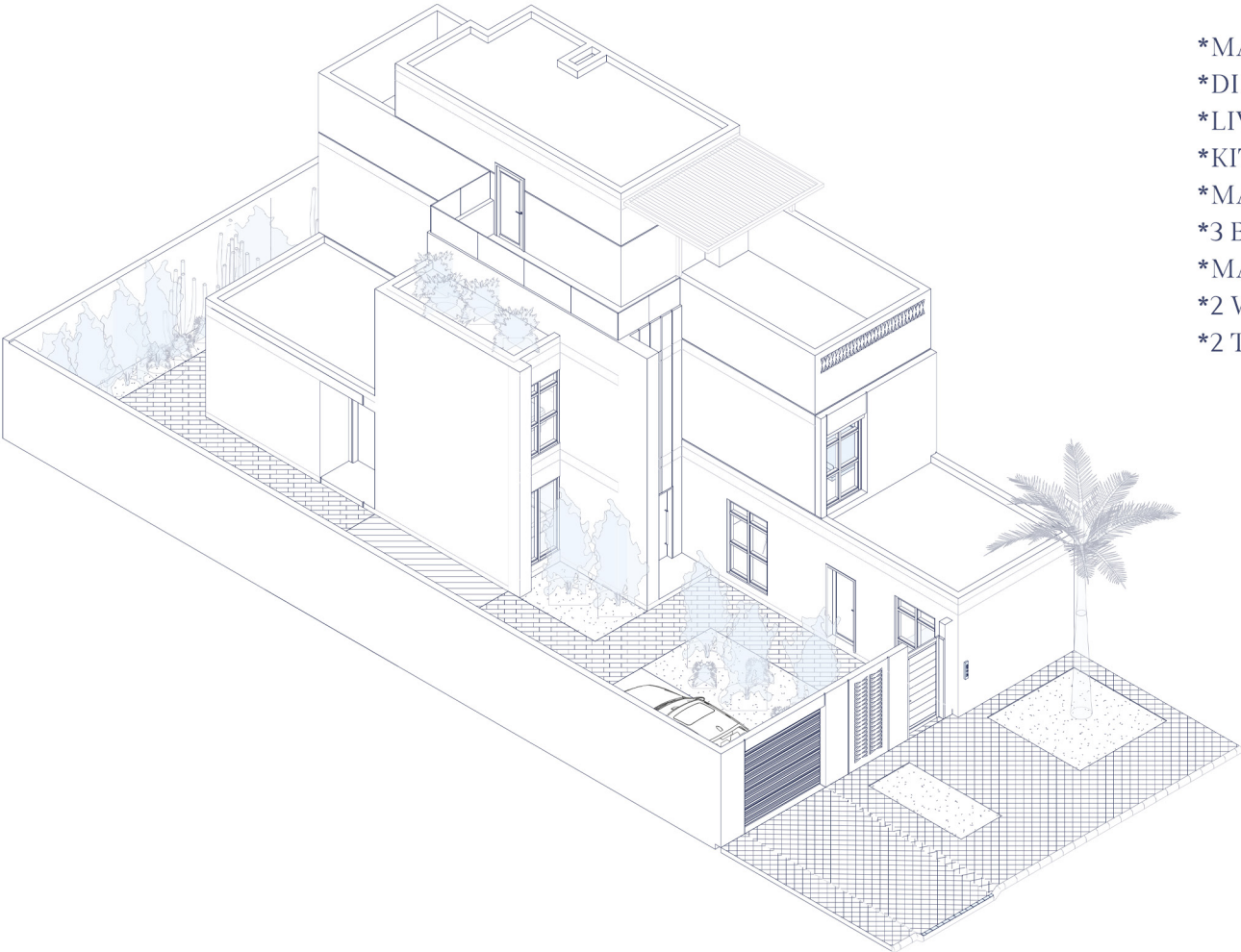
- *MAJLIS
- *DINING ROOM
- *LIVIVG AREA
- *KITCHEN
- *MASTER BEDROOM
- *2 BEDROOMS
- *2 WC
- *ONE TOILETS





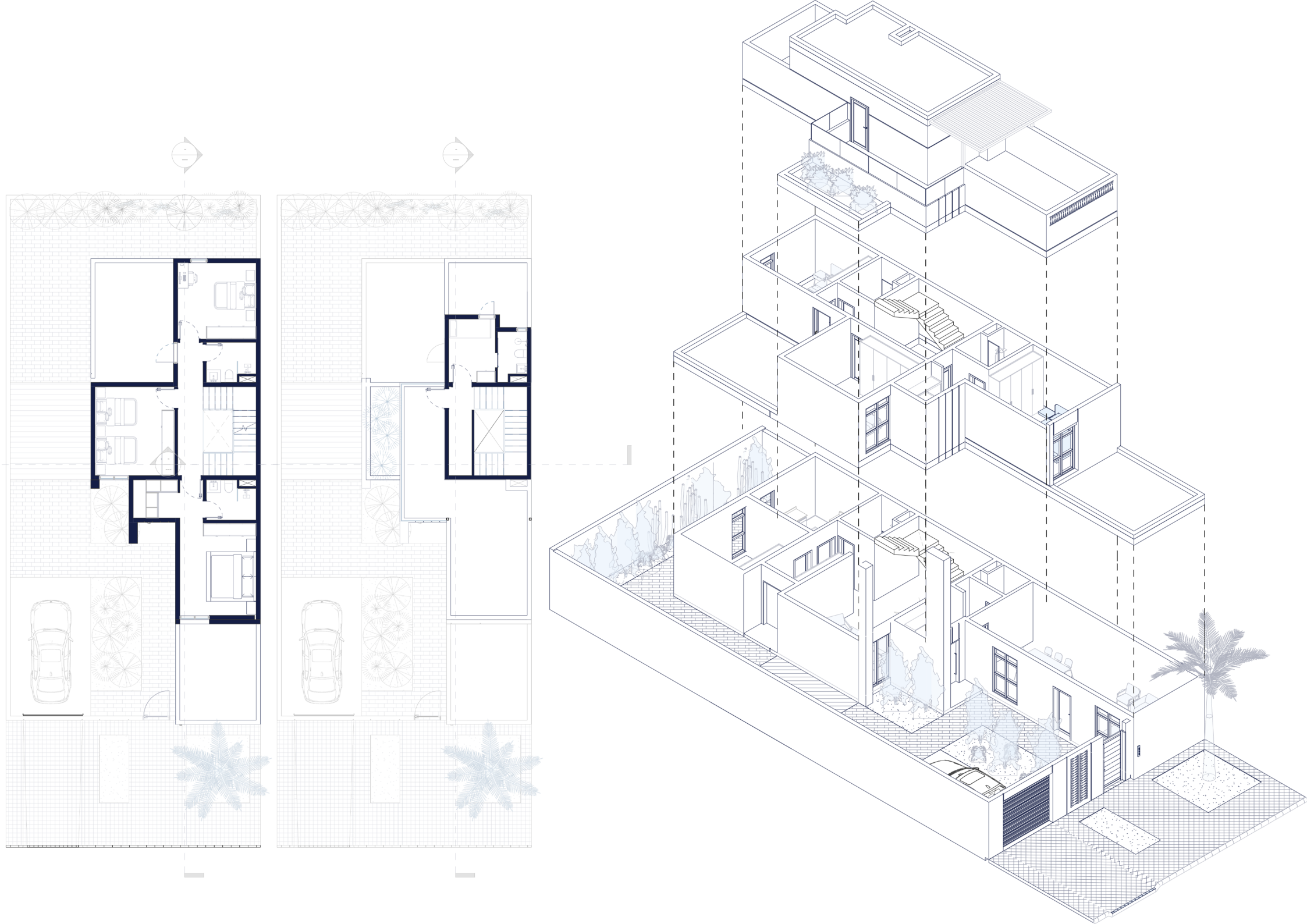


VILLA TYPE- C



- *MAJLIS
- *DINING ROOM
- *LIVIVG AREA
- *KITCHEN
- *MASTER BEDROOM
- *3 BEDROOMS
- *MAID ROOM
- *2 WC
- *2 TOILETS

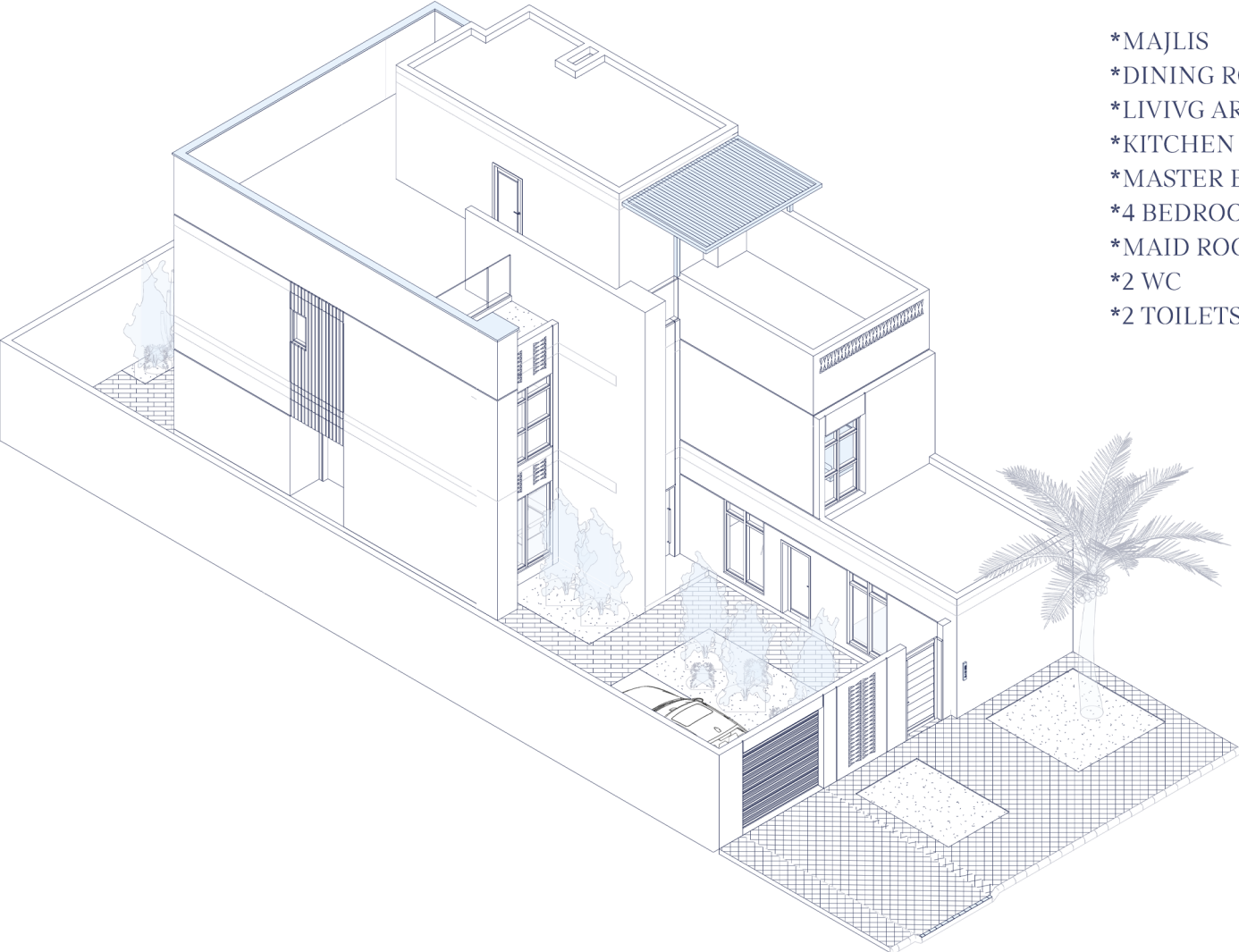




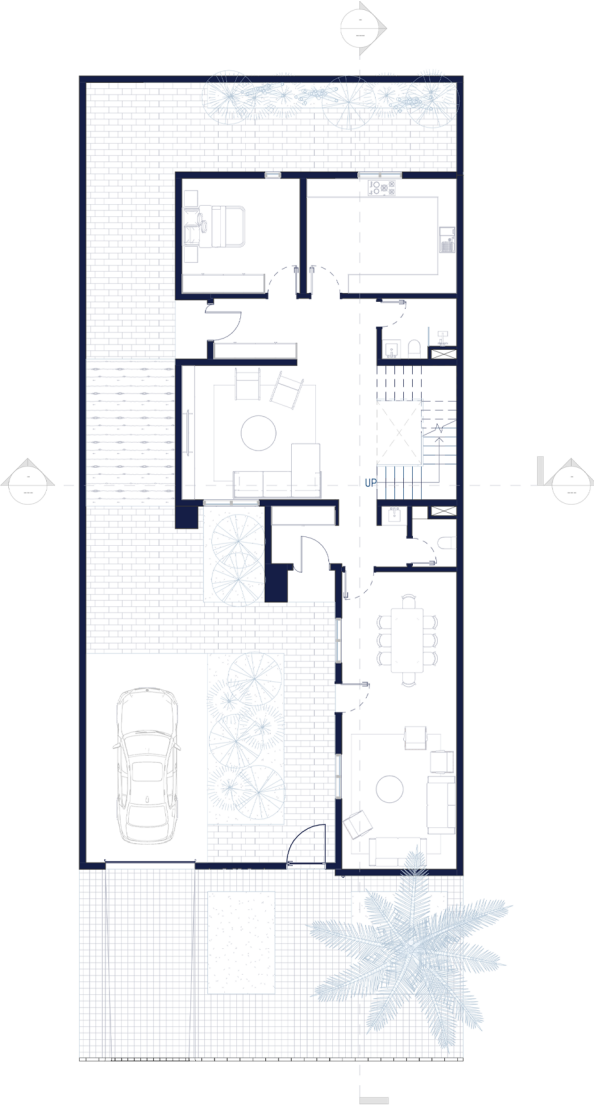


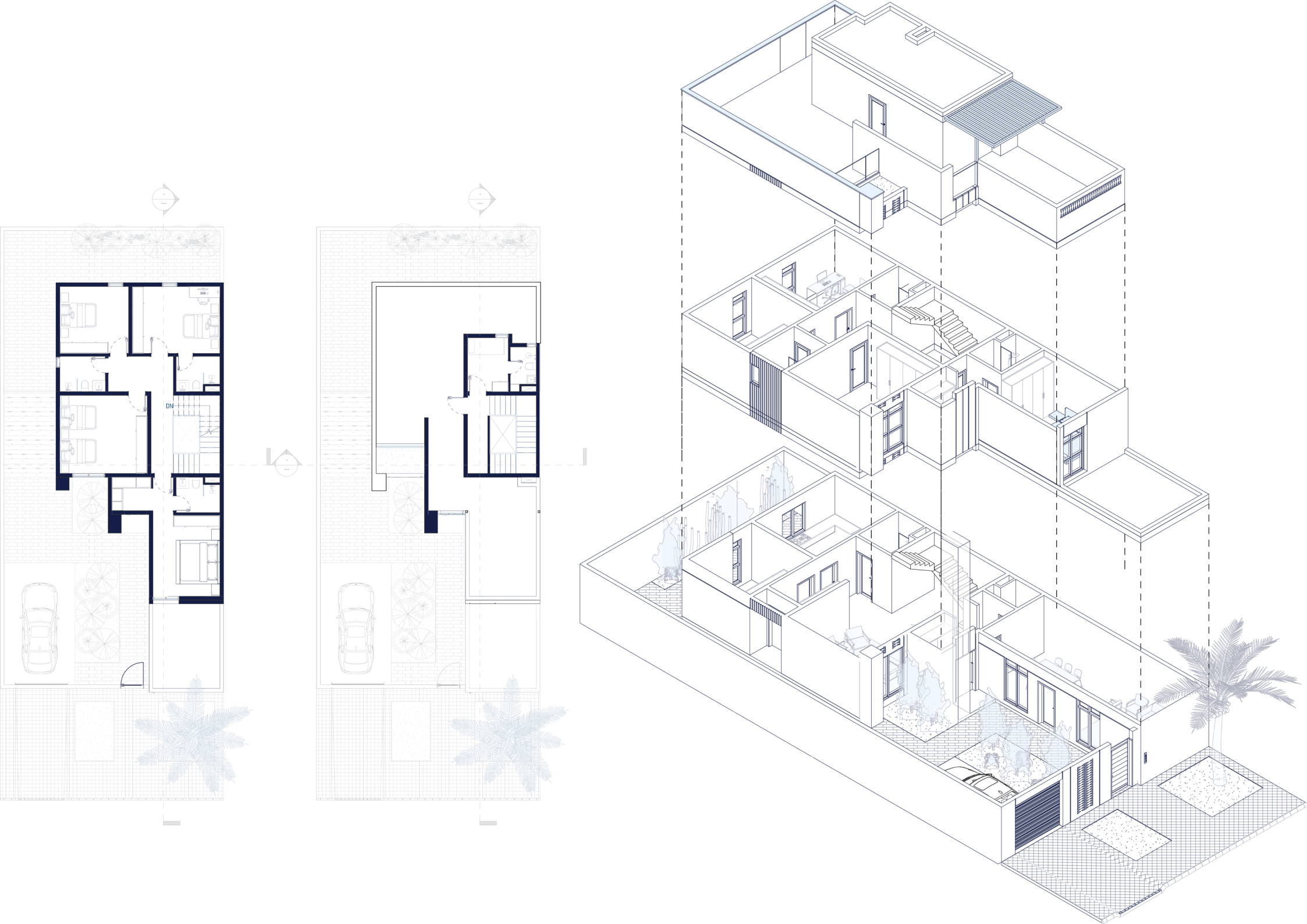


VILLA TYPE- D



- *MAJLIS
- *DINING ROOM
- *LIVIVG AREA
- *KITCHEN
- *MASTER BEDROOM
- *4 BEDROOMS
- *MAID ROOM
- *2 WC
- *2 TOILETS









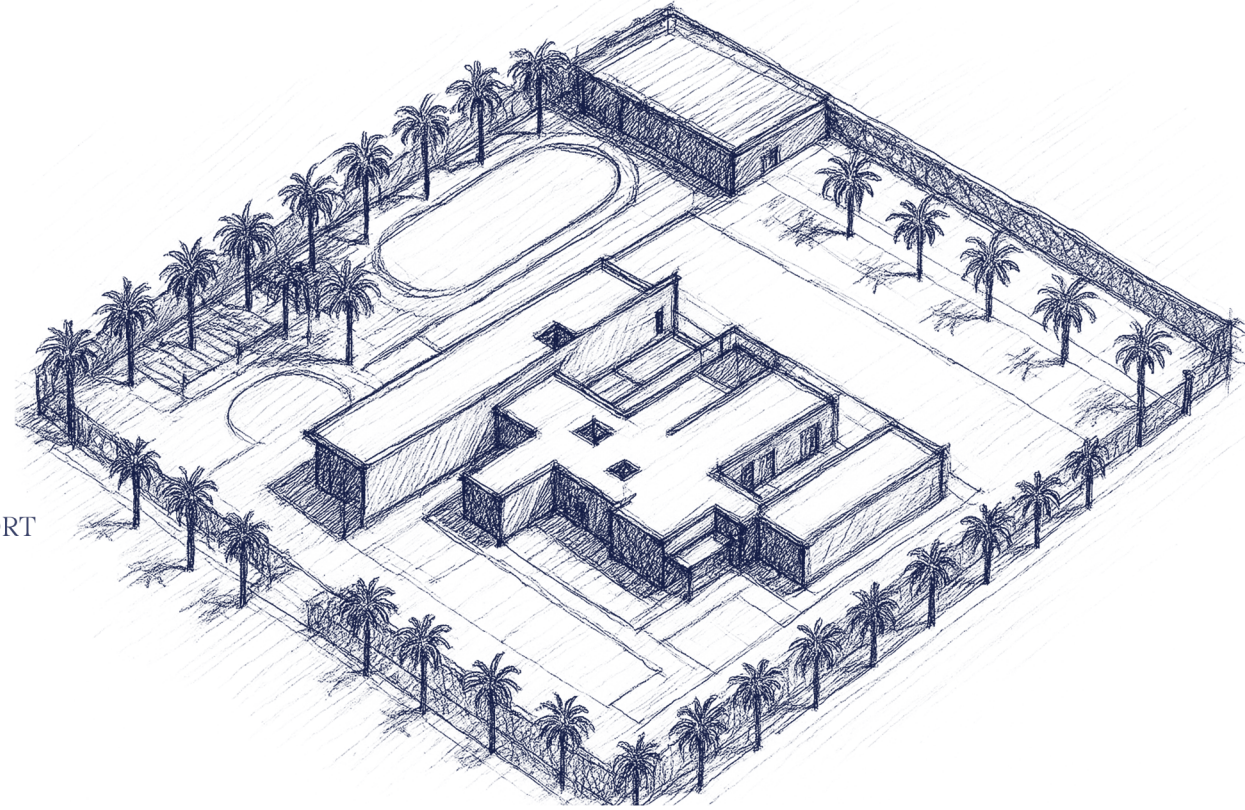
3.2 MALHAM RESORT

PROJECT TYPE: LUXURY RESORT

PROJECT YEAR: 2024

LOCATION: RIYADH

AREA: 8000 M2

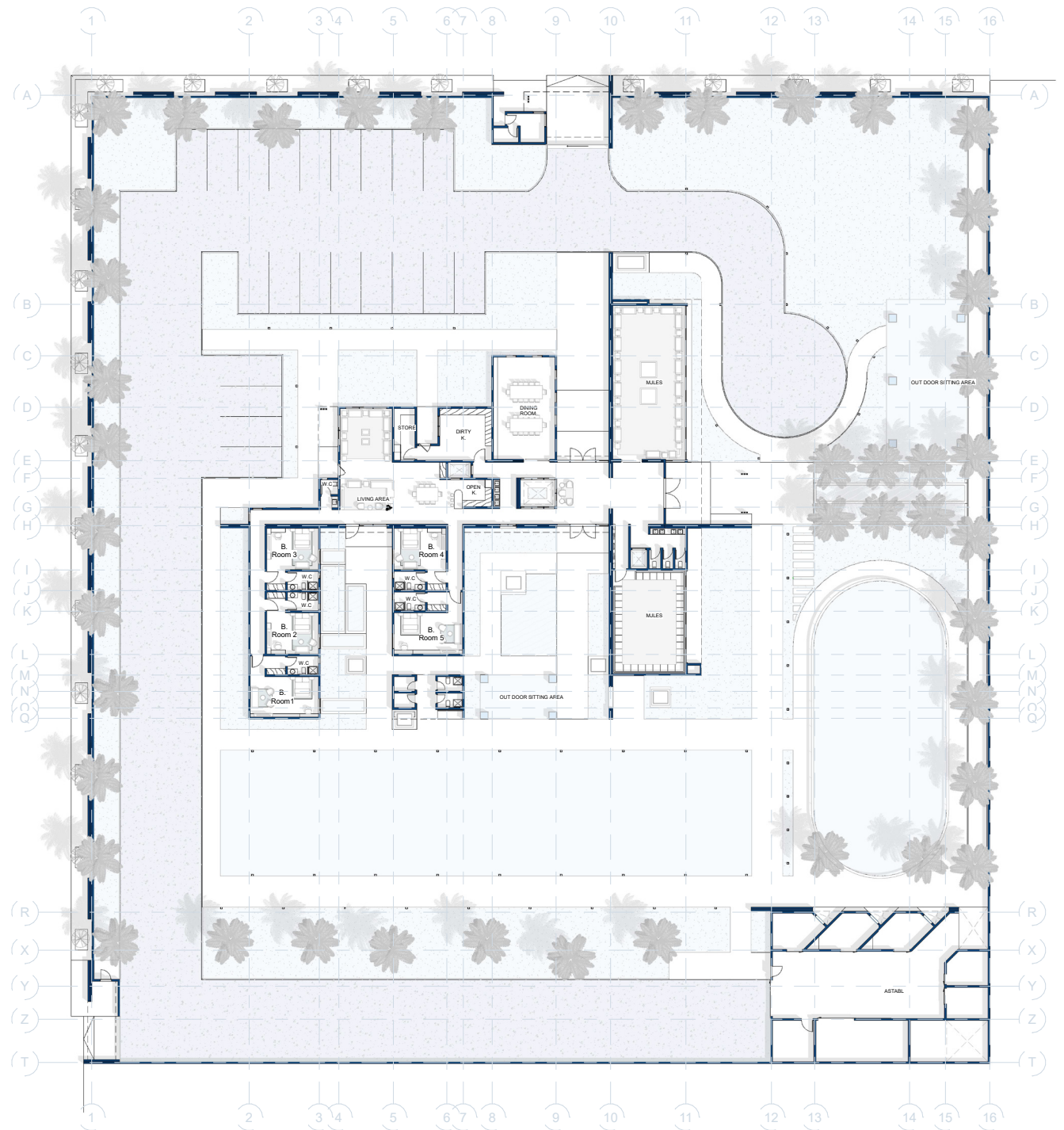


Located in **Mulham, Riyadh**, the **Mulham Luxury Resort** spans a total area of 8,000 m² with a built-up area of **1,100 m²**, designed to harmonize with the surrounding desert landscape. The architectural concept draws inspiration from the site's natural context, utilizing **locally sourced stone and natural finishes** that reflect the authenticity of the environment while maintaining a sense of luxury.

The resort is designed to host up to 120 guests, luxury suites, outdoor swimming pool, and a stable to enrich the guest experience. At the heart of the design lies a philosophy of seamless integration with nature, where visual connectivity between indoor and outdoor spaces is achieved from every viewpoint within the building.

Furthermore, the interior courtyards are thoughtfully integrated with the internal spaces, creating fluid transitions that enhance both functionality and atmosphere. The result is a refined architectural experience that blends comfort, privacy, and a deep connection to the natural surroundings.













3.3 SY PALACE

PROJECT TYPE: COMMERCIAL

PROJECT YEAR: 2025

LOCATION: QASSIM, BURYDAH

AREA: 1200 M2

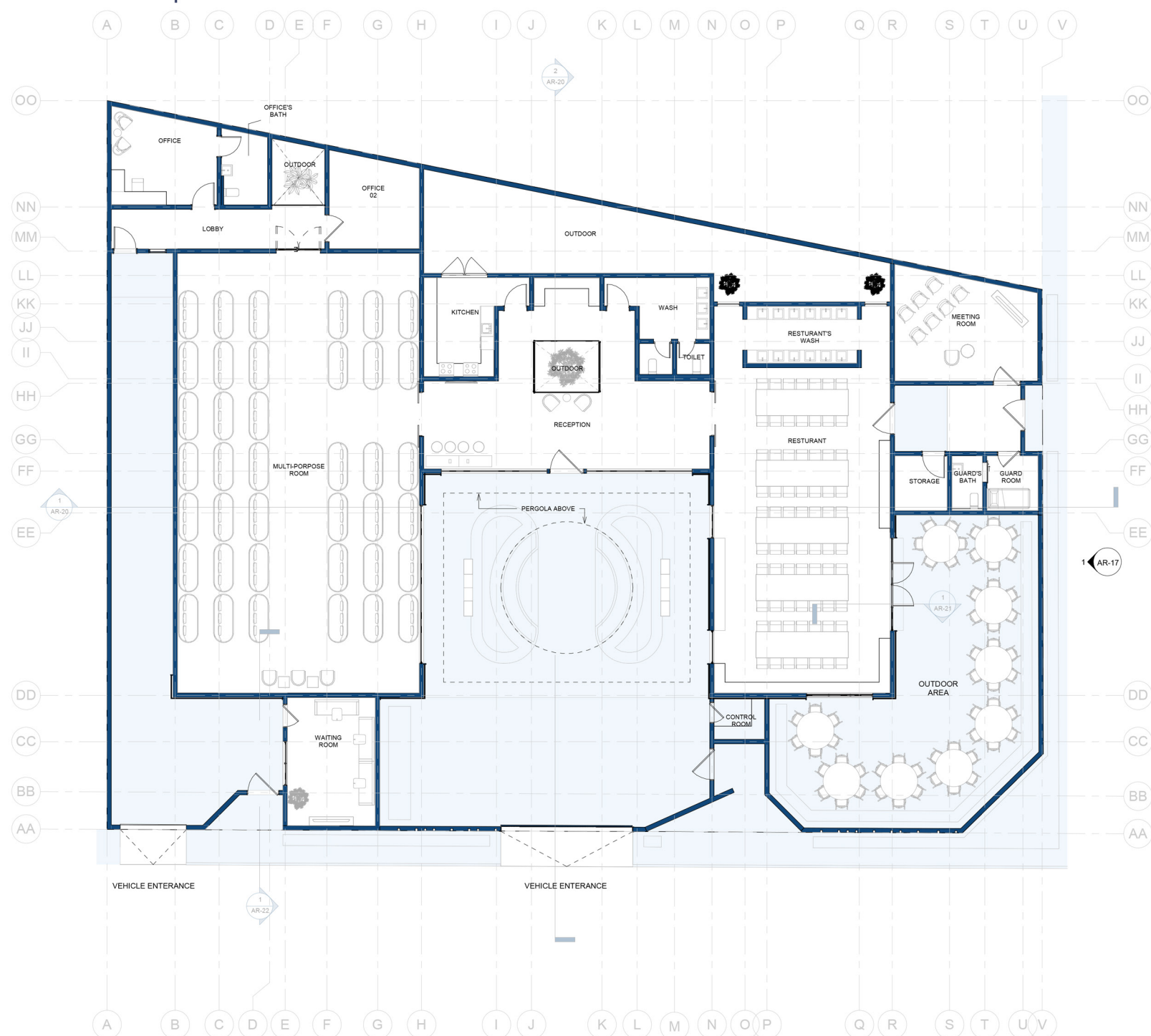
The **SY Palace** project stands as one of our distinguished architectural achievements, designed to provide an exclusive venue for prestigious events, formal gatherings, and **high-level meetings**. Spanning a total area of 1,200 m² in the city of Buraidah, the project embodies a refined architectural vision that blends local identity with contemporary elegance. The design highlights the use of local white stone combined with weathered steel elements, creating a distinctive façade that reflects both solidity and innovation. The building consists of a single floor and features a grand reception hall with a luxurious neoclassical design, a 6-meter ceiling height, and a capacity of 130 guests. Complementing this is a dedicated dining hall supported by full-service areas.

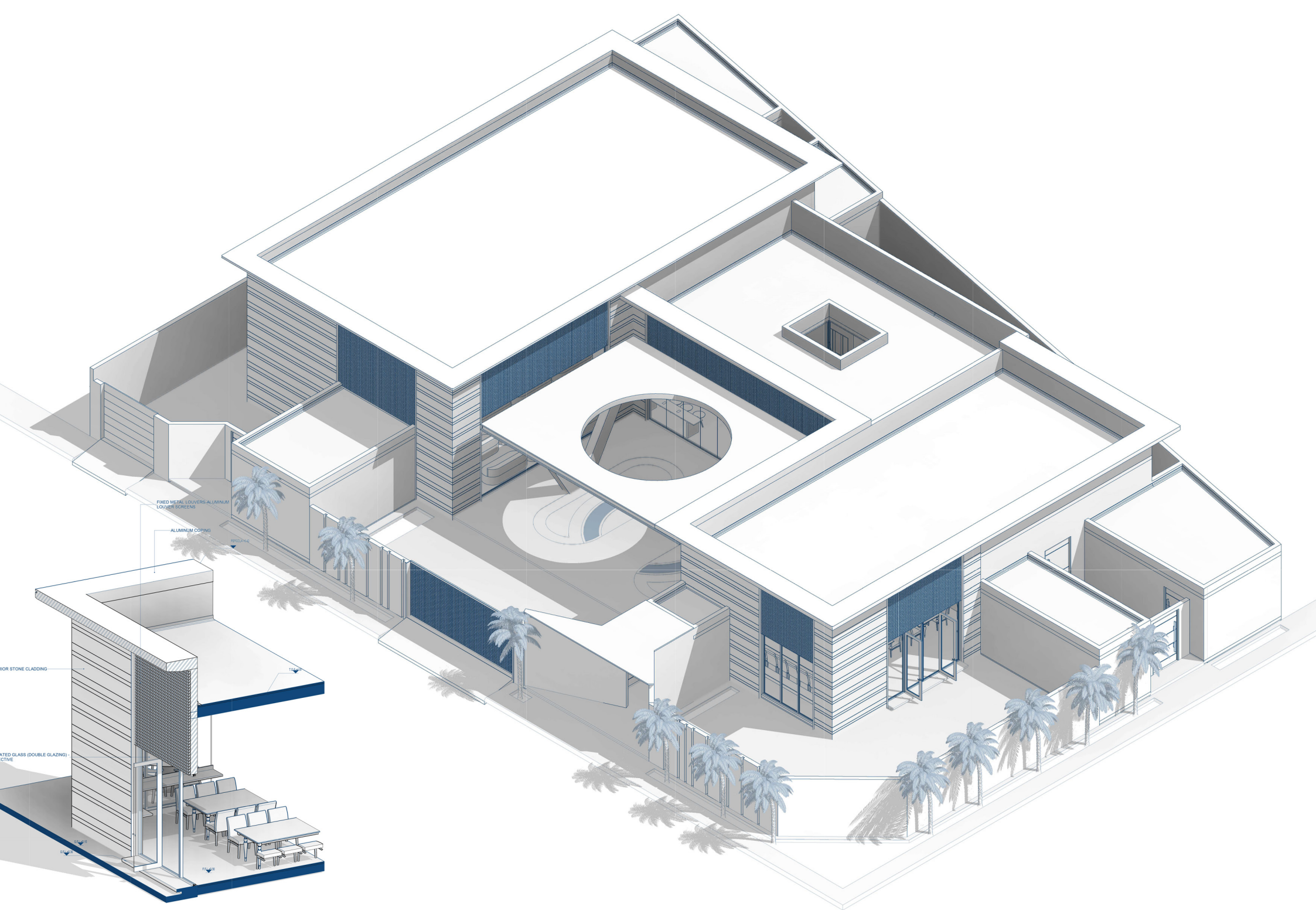
The project is further enriched with landscape elements, including green and water features, along with internal courtyards that enhance natural lighting and introduce creative architectural touches. Together, these elements establish SY Palace as a unique commercial landmark for luxury and functionality.





OUR PROJECT SELECTED | ARCHITECTURAL





OUR PROJECT SELECTED | ARCHITECTURAL

EXTERIOR WHITE PAINTING ON CEMENT
PLASTERING

EXTERIOR WHITE PAINTING ON CEMENT
PLASTERING

EXTERIOR STONE CLADDING

FIXED METAL LOUVERS-ALUMINUM
LOUVER SCREENS

ALUMINUM COPING

T.O. COPING +7.32

T.O. BOUNDARY WALL +3.35

T.O. BOUNDARY WALL +2.80

T.O. BOUNDARY WALL +2.80

T.O. COPING +4.90

T.O. COPING +6.42

FIXED METAL LOUVERS-ALUMINUM
LOUVER SCREENS
INSULATED GLASS (DOUBLE GLAZING) -
REFLECTIVE

T.O.P. +2.75

T.O. BOUNDARY WALL +2.80

ALUMINUM CLADDING PERGOLA

STEEL COLUMN

T.O. COPING +6.42

PERGOLA +4.90

T.O.P. +3.70

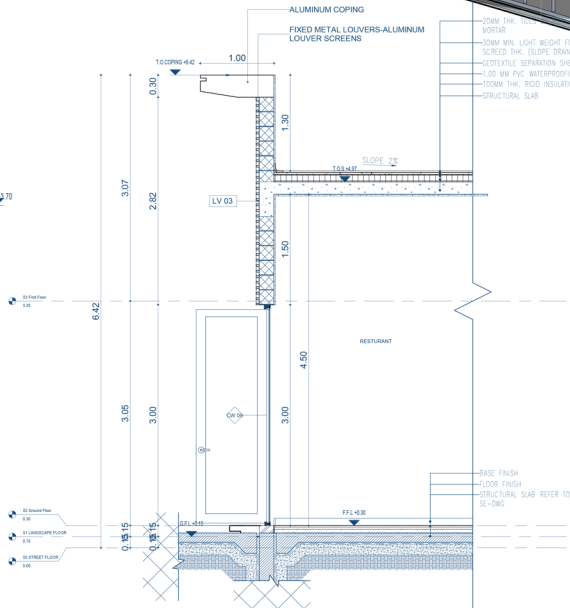
FFL +0.30

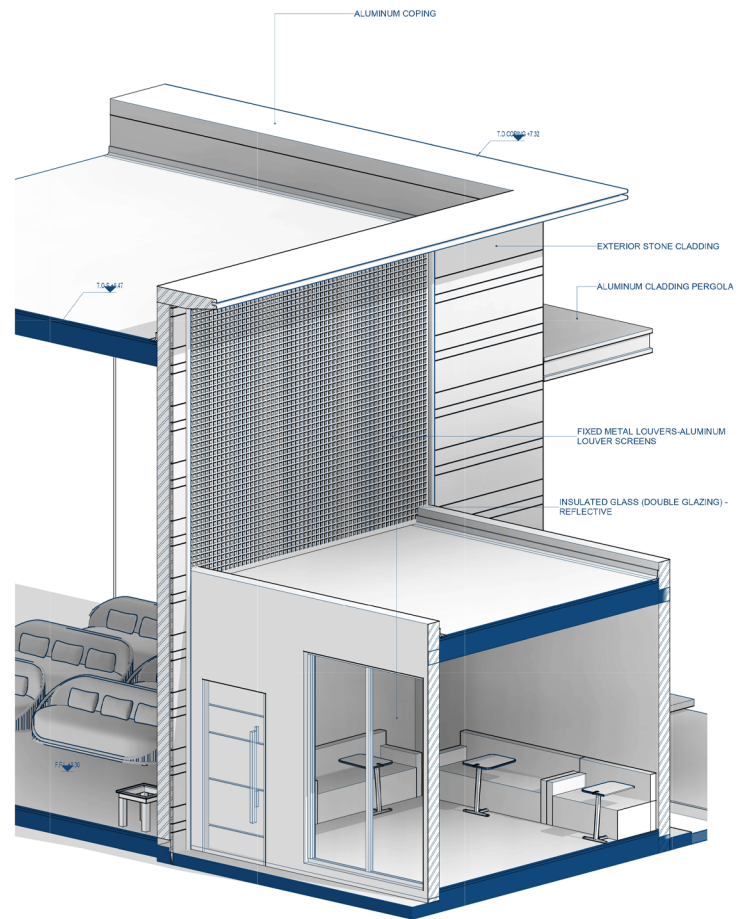
G.F.L. +0.30

ALUMINUM COPING

FIXED METAL LOUVERS-ALUMINUM
LOUVER SCREENS

20MM THK. POLY-
BUTYLENE
20MM MIN. LIGHT WEIGHT FLOW-
SCREED THK. (SLOPE DRAIN)
SCOTCHGATE SEPARATION SHEET
1.00 MM PVC WATERPROOFING MEMBRANE
100MM THK. RIGID INSULATION
STRUCTURAL SLAB









3.4

GUEST PALACE

PROJECT TYPE: PRIVATE

PROJECT YEAR: 2025

LOCATION: SAUDI ARABIA. QASSIM

Style: CLASSIC ELEGANCE

AREA: 1029 M2

Qasr Al-Diyafa is a **luxury guest palace** designed to embody timeless elegance with **rich classical details**. The project features a grand reception hall, a formal dining area, and a majestic entrance, all crafted with refined finishes, intricate moldings, and a harmonious lighting scheme. The design balances opulence with functionality, creating a welcoming atmosphere for high-profile gatherings while maintaining a sense of exclusivity.









3.5

AL-RIMAL PALACE

PROJECT TYPE: PRIVATE

PROJECT YEAR: 2024

LOCATION: SAUDI ARABIA. RIYADH

Style: NEOCLASSICAL

AREA: 1200 M2

Al-Rimal Palace project reflects **timeless classical elegance** infused with a contemporary spirit that shines through its refined interior details. The design emphasizes spacious layouts that harmoniously blend grandeur and sophistication, featuring ornate gypsum work, luxurious flooring, and carefully curated lighting to enhance the palace's ambiance. Every interior space was crafted to embody a lavish lifestyle — from the majestic reception halls to the expansive living areas, down to the intricate details that give each corner a distinctive character.

Al-Rimal Palace is not just a residence; it is an architectural masterpiece that celebrates refined taste and offers its residents an exceptional living experience.

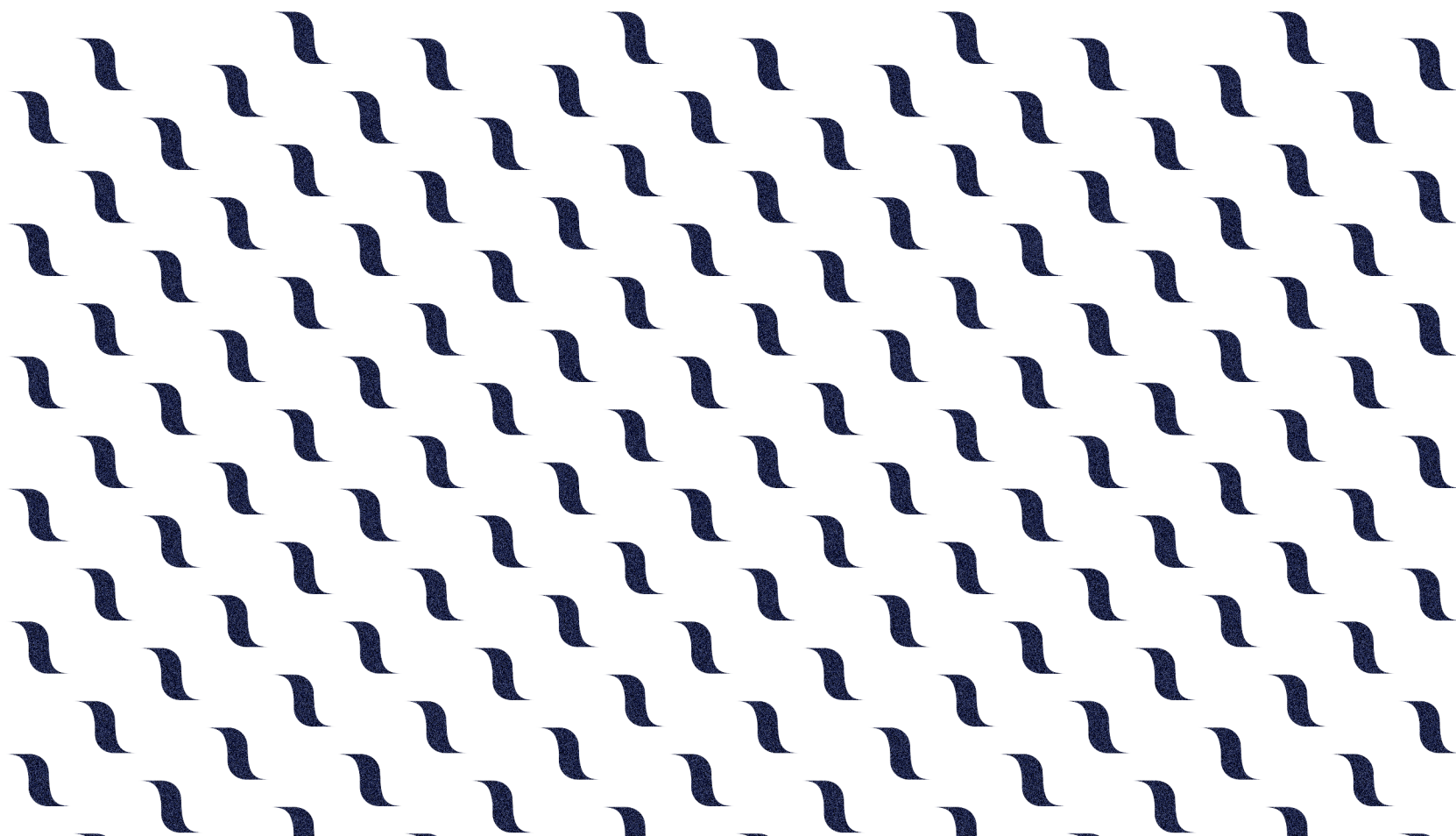






OUR PARTNERS

Our clients are at the heart of every project we undertake. Their trust and collaboration drive us to deliver designs and solutions that go beyond expectations. Each partnership reflects a shared vision built on transparency, professionalism, and innovation. The testimonials we receive echo our unwavering dedication to quality, attention to detail, and meaningful impact. We value every client as a true partner in success, working hand in hand to transform ideas into reality. Together, we create spaces that inspire, endure, and contribute to a sustainable future, leaving a positive mark that lasts for generations.





سكف
SAKEF



OTIS



05



Riyadh
office



CONTACT US



info@rof.sa



+966 55 779 4681



Al-Qassim, Buraydah, Qurtuba



Riyadh, Al-Yassmen 13325 first floor



www.rof.sa



/ rofarc_co

Al-Qassim
office



